

Clavicle plates

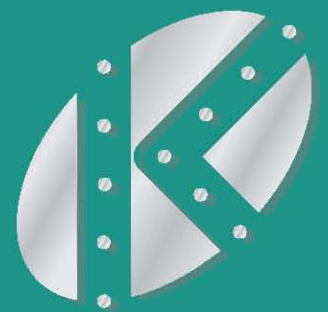
Angle-stable lateral clavicle plate



Angle-stable clavicle shaft-plate



Angle-stable AC-joint-hook-plate



KÖNIGSEE
IMPLANTATE
UND INSTRUMENTE ZUR
OSTEOSYNTHESE GmbH

AM SAND 4 / OT-Aschau
D-07426 ALLENDORF
Phone: +49 (0) 36738 498-0
Fax: +49 (0) 36738 498-19
E-Mail: info@koenigsee-implantate.de
Internet: www.koenigsee-implantate.de

Indication / Recommendations for use / Advantages

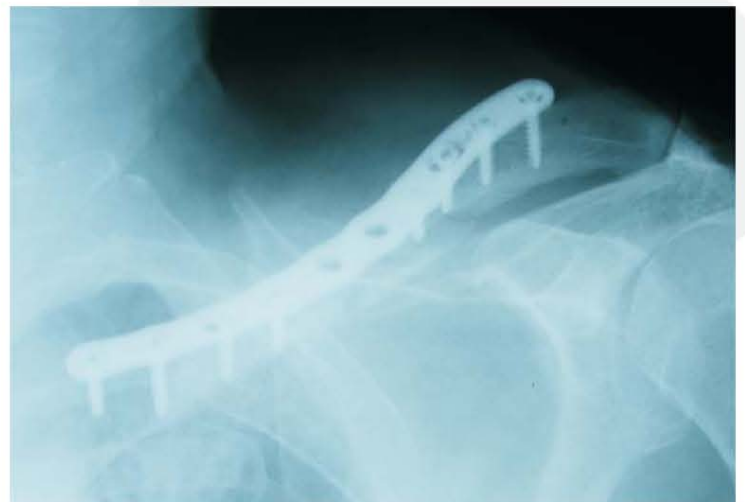
Angle-stable lateral clavicle plate:

- lateral third-clavicular fractures



Angle-stable clavicle shaft-plate:

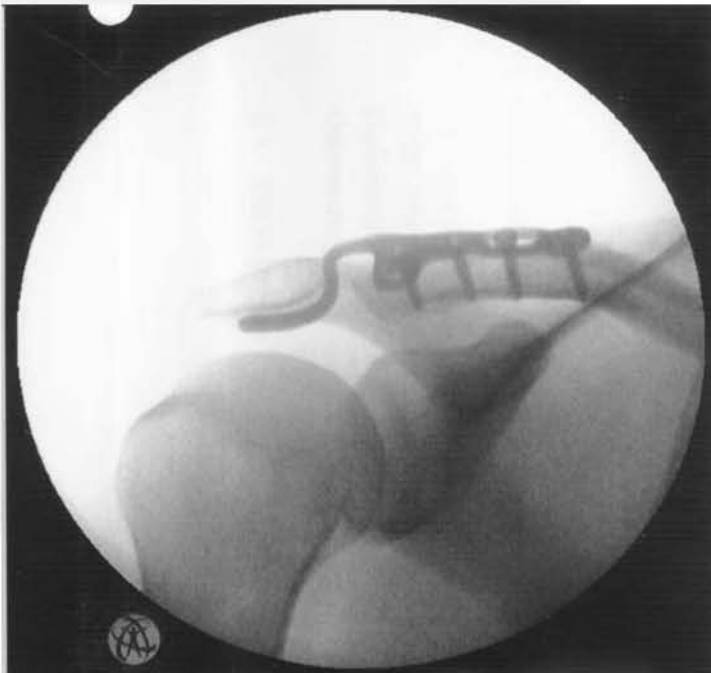
- comminuted shaft clavicular fractures and revision in shaft



Indication / Recommendations for use / Advantages

Angle-stable AC-joint hook-plate:

- AC-joint dislocation (Rockwood III-V)



Why angle-stable?

The use of an angle-stable implant provides a higher stability against secondary dislocation, and reduce the risk of avulsion, especially for osteoporotic bones.



Implants

Description

Complete set of instruments / implants in Titanium
 Perforated autoclavable container with insert-tray for instruments / implants

Code N°

19.478.00
 19.477.00



(5.3502.34)

Angle-stable clavicle plate, lateral, *right* for screws D 3,5 / D 4,0 mm

Code N° Titanium	N° of holes head/shank	Plate length mm
5.3502.34	3/4	65
5.3502.36	3/6	82



(5.3512.34)

Plate thickness: 3,0 mm
 Plate width/head: 20,0 mm
 Plate width/shank: 10,0 mm
 Distance of holes: 8,5 mm

Angle-stable clavicle plate, lateral, *left* for screws D 3,5 / D 4,0 mm

Code N° Titanium	N° of holes head/shank	Plate length mm
5.3512.34	3/4	65
5.3512.36	3/6	82

Combination holes for optional insertion of fixed-angle or standard screws.



(5.3522.08)

Angle-stable clavicle shaft-plate, *right* for screws D 3,5 / D 4,0 mm

Code N° Titanium	N° of holes	Plate length mm
5.3522.08	8	99
5.3522.10	10	123



(5.3532.08)

Plate thickness: 3,0 mm
 Plate width: 12,0 mm
 Distance of holes: 13,0 mm

Angle-stable clavicle shaft-plate, *left* for screws D 3,5 / D 4,0 mm

Code N° Titanium	N° of holes	Plate length mm
5.3532.08	8	99
5.3532.10	10	123

Combination holes for optional insertion of fixed-angle or standard screws.



(5.3542.1418)

Angle-stable AC-joint hook-plate, *right*
for screws D 3,5 / D 4,0 mm

Code N° Titanium	N° of holes head/shank	Plate length mm	Hook depth mm
5.3542.1418	2/3	78	14
5.3542.1818	2/3	78	18



(5.3552.1418)

Plate thickness: 3,0 mm
Plate width/head: 27,0 mm
Plate width/shank: 10,0 mm
Distance of holes: 12,0 mm
Hook length: 18,0 mm

Angle-stable AC-joint hook-plate, *left*
for screws D 3,5 / D 4,0 mm

Code N° Titanium	N° of holes head/shank	Plate length mm	Plate length mm
5.3552.1418	2/3	78	14
5.3552.1818	2/3	78	18

Combination holes for optional insertion of fixed-angle or standard screws.



Screw diameter: 3,5 mm
Core diameter: 2,5 mm
Head diameter: 6,0 mm
Hexagon socket: 2,5 mm
Drill-bit for thread hole: 2,5 mm

Angle-stable cortical screw D 3,5 mm, self-tapping

Code N° Titanium	Screw length mm
3.133.10	10
3.133.12	12
3.133.14	14
3.133.16	16
3.133.18	18
3.133.20	20
3.133.22	22
3.133.24	24



Screw diameter: 3,5 mm
Core diameter: 2,5 mm
Head diameter: 6,0 mm
Hexagon socket: 2,5 mm
Drill-bit for thread hole: 2,5 mm
Drill-bit for cannulation: 3,5 mm

Cortical screw D 3,5 mm, self-tapping

Code N° Titanium	Screw length mm
3.132.10	10
3.132.12	12
3.132.14	14
3.132.16	16
3.132.18	18
3.132.20	20

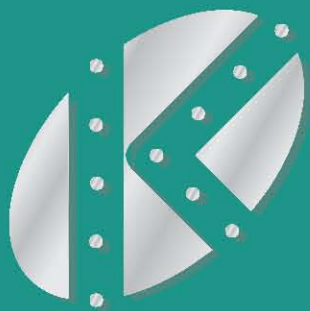
Kirschner-wire with trokar point, rounded end



Code N° Stainless steel	Diameter mm	Length mm	Quantity in set
6.021.16	1,6	120	5

Wiedergabe des Inhalts, auch auszugsweise, nur mit schriftlicher Genehmigung des Herausgebers.

No part of this publication may be reproduced, stored in a retrieval system or transmitted in any form or by any means electronic, mechanical, photocopying, recording or otherwise without the prior written permission of the publisher.



KÖNIGSEE
IMPLANTATE
UND INSTRUMENTE ZUR
OSTEOSYNTHESE GmbH

Ärztlicher Autor:

Winkelstabile laterale Claviculaplatte
und winkelstabile Clavículaschaftplatte

Ltd. OA Dr. med. Friedhelm Bauer

Kreisklinikum Siegen

Klinik für Unfall-, Hand- und orthopädische Chirurgie

Ärztlicher Autor:

Winkelstabile AC-Gelenkshakenplatte

CA PD Dr. med. Rainer Wölfel

Klinikum Fürth

Klinik für Unfallchirurgie und orthopädische Chirurgie

KÖNIGSEE IMPLANTATE UND INSTRUMENTE ZUR OSTEOSYNTHESE GmbH

AM SAND 4 / OT-Aschau

D-07426 ALLENDORF

Phone +49 (0) 36738 498-0

Fax +49 (0) 36738 498-19

e-Mail: info@koenigsee-implantate.de